

IT'S ONLY FABRIC AND THREAD



67" X 81" THROW QUILT

Simple Chain

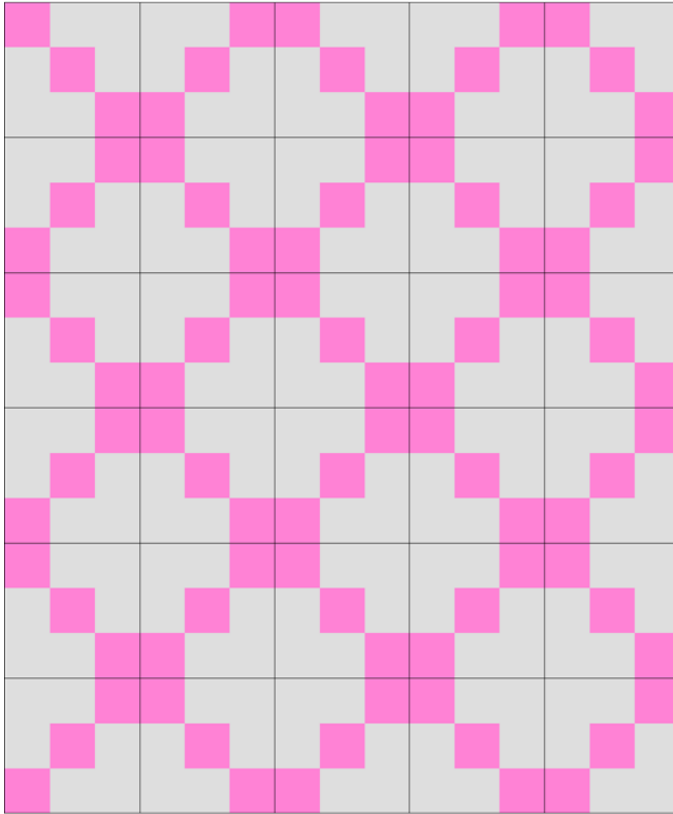
A QUILT PATTERN BY
KATHERINE CURTSINGER



PATTERN #103



SIMPLE CHAIN QUILT PATTERN | IT'S ONLY FABRIC AND THREAD



Recommended Tools

- Rotary Cutter
- Cutting Mat
- Marking Utensil
- Square Ruler, any size
- Seam-ripper (just in case!)

Pattern assumes basic sewing knowledge.

Fabric Requirements

Fabric A - Pink 1 3/4 yard or 7 FQ

Fabric B - Grey 3 1/4 yard or 14 FQ

Backing 5 yard

Batting 5 1/4 yard

Binding 5/8 yard

This pattern is also great for scraps!! Just ensure that your scraps are at least 5" by 5" square, or you can use up charm packs if you have any laying around.

Before you begin:

- All seams are 1/4" unless directions specify
- Selvages should be removed
- Width of fabric is abbreviated "WOF" and is assumed to be 42"
- Pattern is for personal use only. Do not copy, sell or distribute without written consent.
- License to sell: You may sell items made using this pattern as a small independent seller. Please credit the pattern design to "It's Only Fabric and Thread".

Cutting Requirements:

For both Fabric A and Fabric B: Cut fabric, FQ, or scraps into 5" x WOF Strips. Then sub-cut into 5" squares.

You will need the following number of 5" squares for each fabric:

- Fabric A: 90
- Fabric B: 180

Assembling the Quilt Top:

1. Make the blocks

Using 6 Fabric B 5" squares and 3 Fabric A 5" squares, assemble the below block.

A	B	B
B	A	B
B	B	A

Row 1: A, B, B - Press this row to the right

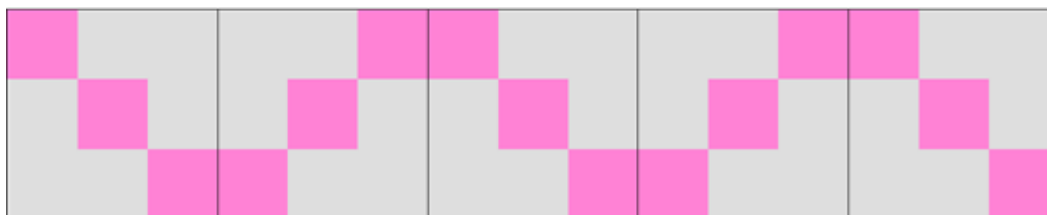
Row 2: B, A, B - Press this row to the left

Row 3: B, B, A - Press this row to the right

Repeat this process and make a total of 30 blocks.

2. Assemble the row units

Unit 1 - Combine 5 blocks in the below lay out. Make 3 units total. Press seams open as you combine the blocks.



Assembling the Quilt Top:

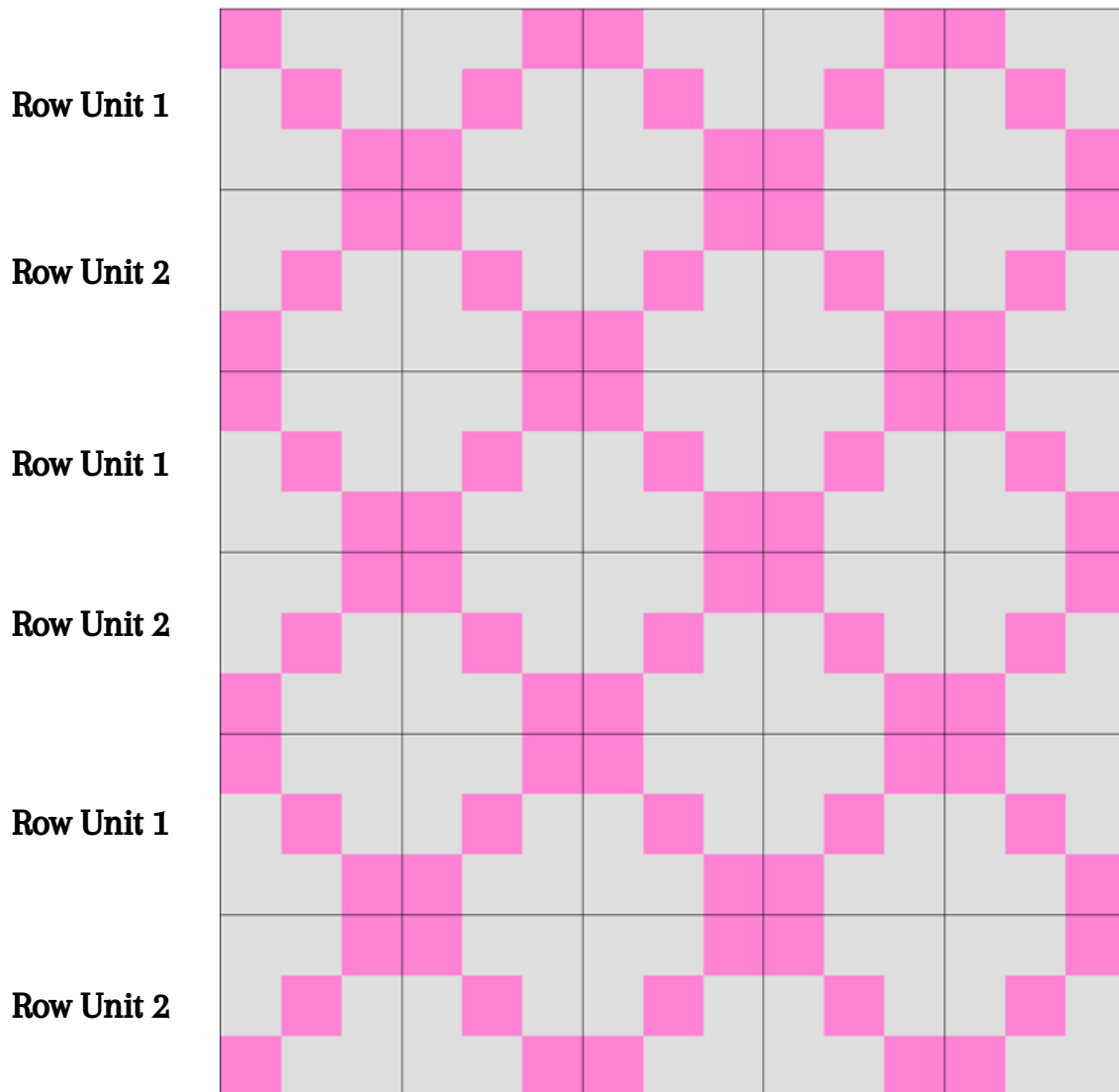
2. Assemble the row units (continued)

Unit 2 - Combine 5 blocks in the below lay out. Make 3 units total. Press seams open as you combine the blocks.



3. Combine the rows to finish the quilt top

Use the below diagram to combine the row units. To ensure a smooth quilt top, press seams open when combining rows.



Finishing your quilt:

Backing

Piece the fabric for the quilt backing as needed.

Basting your quilt top, batting, and backing into the quilt sandwich

Lay backing fabric completely flat and right side down on a large flat surface. You can tape your backing fabric down with masking or painters tape to ensure it is completely flat and does not move. Place your batting on top of your backing fabric and smooth out as flat as possible. Add your pressed quilt top right side up and smooth it out. Baste all three layers together using your preferred method. We typically pin baste using large curved safety pins, and space them 4-5" apart.

If you're feeling fancy, you could send your quilt off to be long-arm quilted and pick one of the many available designs or have it custom quilted. If that is your choice, you can skip the quilt sandwich and prepare your quilt top and backing fabric as instructed by your long-arm quilter.

Quilting and Binding

Get creative and let your imagination be your guide! This design would look great with some custom quilting, or even some simple straight lines.

Sew your binding fabric, or purchase a pre-made option, and attach to the quilt as desired. We typically make our own binding using 2.5" strips (cut WOF) and sew together on the diagonal to reduce bulk; then we machine stitch both the front and back edges to the quilt.

Quick Note from the Author

I hope you have enjoyed this free pattern from It's Only Fabric and Thread. If you share your quilt on social media, please tag us and use our hashtags so we can see your creations! We often share them to our followers so they can see them as well. Use #simplechain and #iofatpatterns and tag us under @itsonlyfabricandthread on Instagram, TikTok, and Facebook.

-XO, Katherine



@itsonlyfabricandthread



@itsonlyfabricandthread



It's Only Fabric and Thread